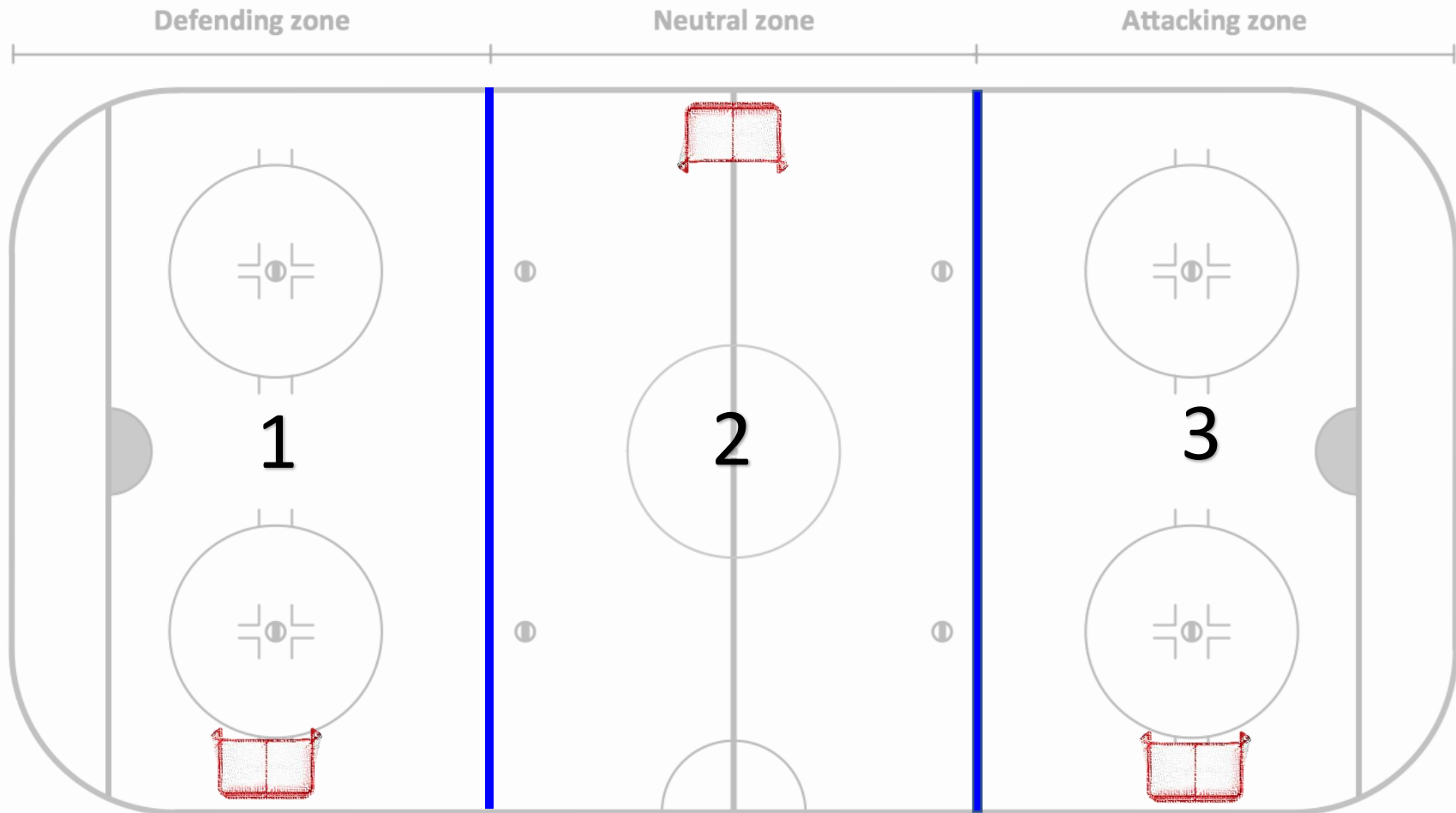


KV Training-Three Groups

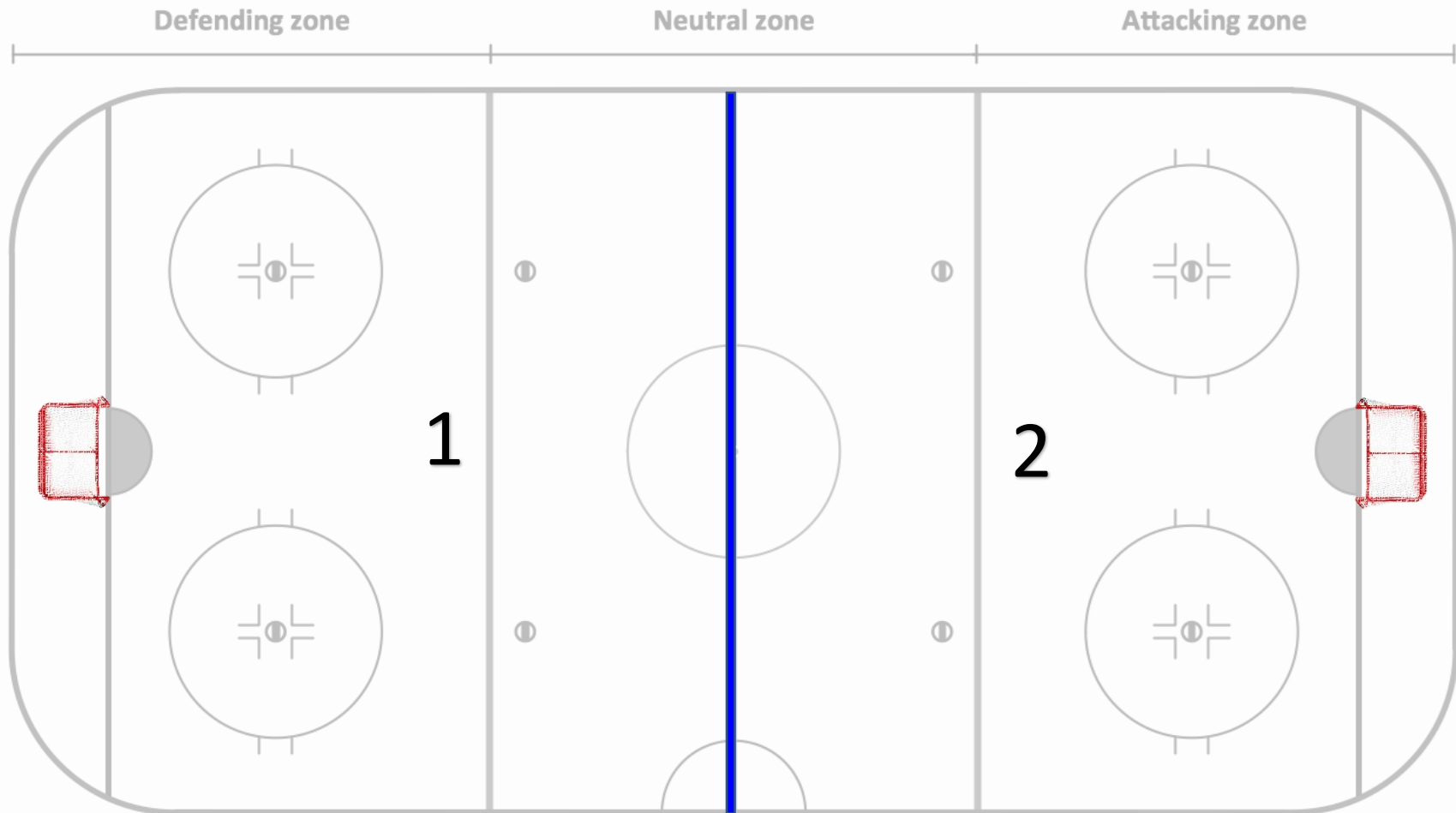


The ice is to be divided amongst training groups equally and respectively. To accomplish this, the above diagram is to be followed.

There is only 1 net allowed per group and a max of 4 groups per session.

Nets are never to be positioned in a way in which would lead to a shooter to shoot towards another group, person, or door.

KV Training-Two Groups

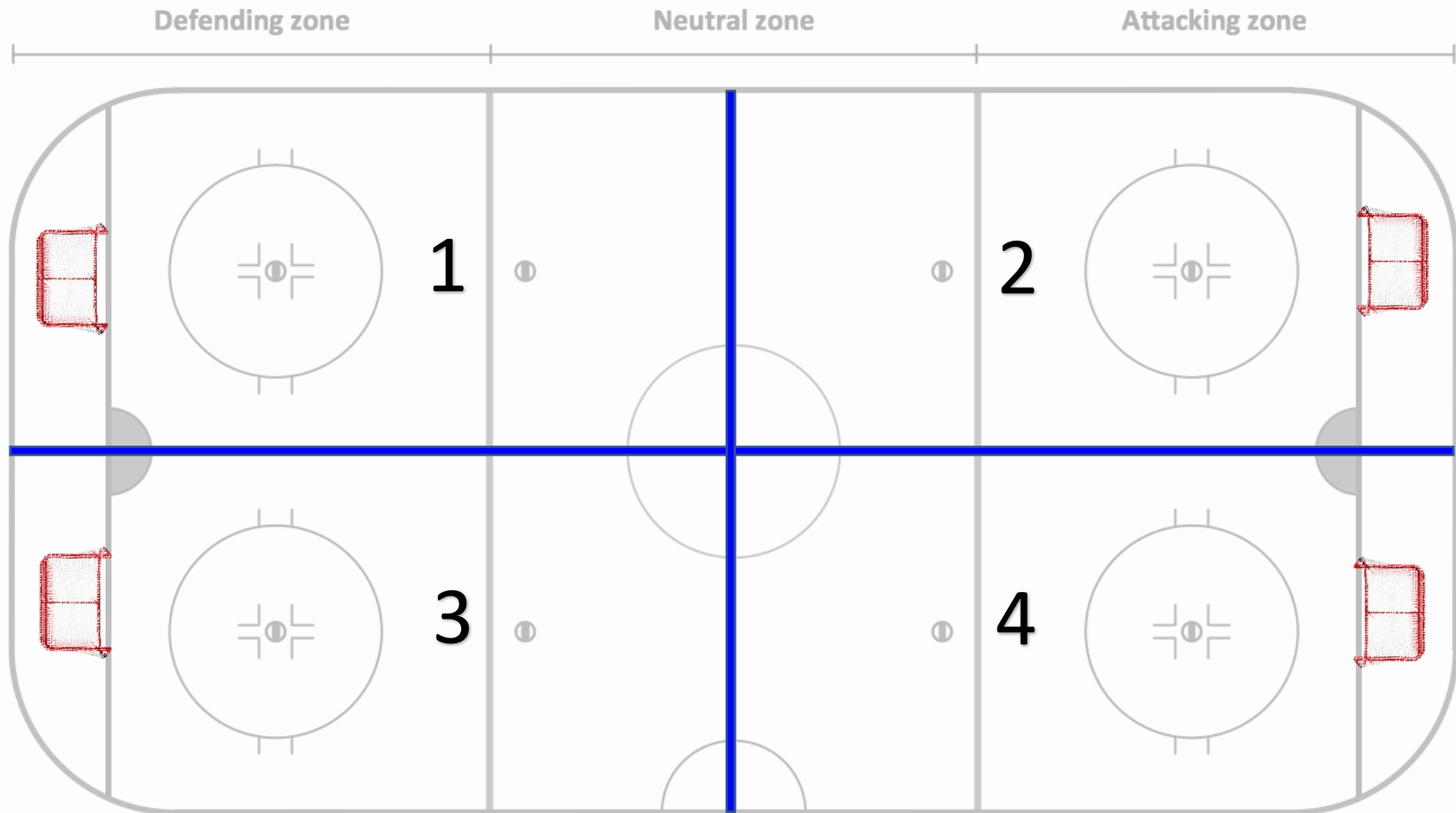


The ice is to be divided amongst training groups equally and respectively. To accomplish this, the above diagram is to be followed.

There is only 1 net allowed per group and a max of 4 groups per session.

Nets are never to be positioned in a way in which would lead to a shooter to shoot towards another group, person, or door.

KV Training-Four Groups



The ice is to be divided amongst training groups equally and respectively. To accomplish this, the above diagram is to be followed.

There is only 1 net allowed per group and a max of 4 groups per session.

Nets are never to be positioned in a way in which would lead to a shooter to shoot towards another group, person, or door.